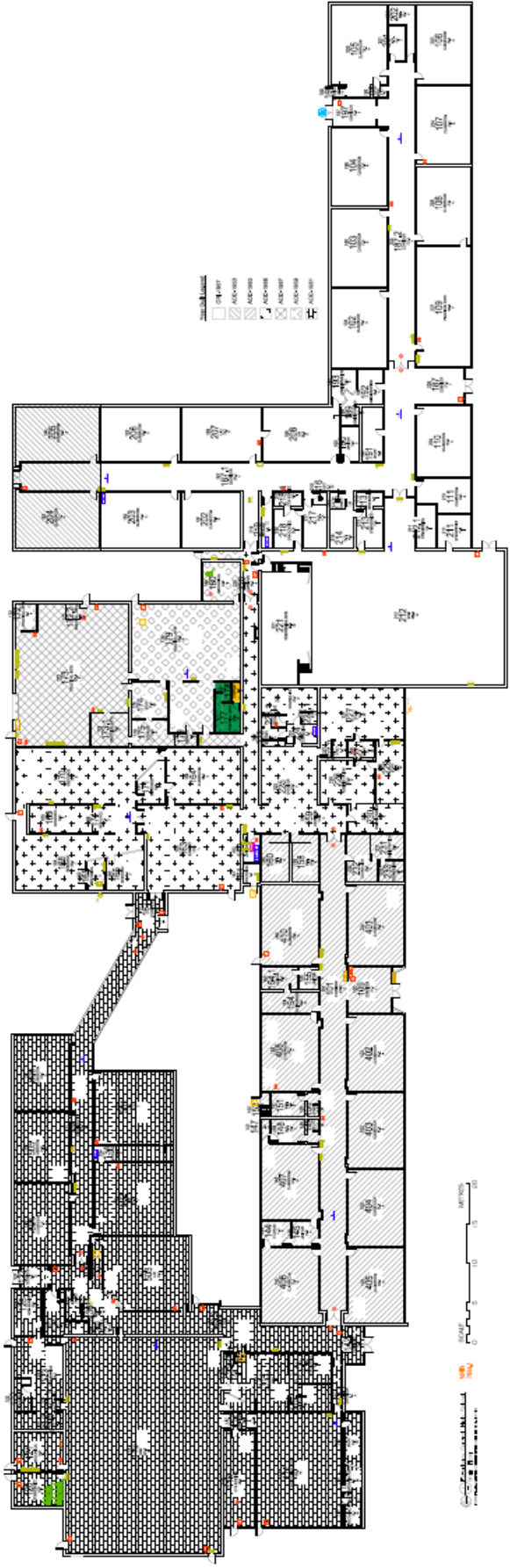


Welcome to Esterhazy High School – January 2022



| School Details | |
|-----------------------|---|
| Grade Configuration | 6 – 12 |
| Size | 7219 m ² (77,705 ft ²) |
| Original Build Date | 1957 – 100/200 Wings and Jr Gymnasium |
| Addition(s) | 1962 – Classrooms 204 and 205 1963 – 400 Wing 1966 – Offices, Library, and Common Space 1967 – Practical Arts (Metals Area) 1969 – Practical Arts (Woods Area and Classroom) 1981 – 500 Wing |
| Current Enrollment | 306 Students |
| Classrooms | 30 – One is used for PPEP |
| Gymnasiums | 2 – Senior and Junior |
| PAA, Library and Band | Woods, Metal, Drafting, Library, and Band |



The Junk-tion – in the centre of the school there is a large open area where there is a canteen.



And a large seating area for students



The school has two gyms. The small gym is in the older section of the school and houses the stage. Through facilities, community and school involvement this stage was revitalized and put back into use.



The second gym is in the senior end of the school. In the fall of 2016 this gym floor was completely refinished and the gym walls were painted.



The library has been a labour of love by the dedicated staff at EHS. The librarian spent hours improving her space.



The classrooms and hallways in the older section of the school are very large – typical of this era of construction.



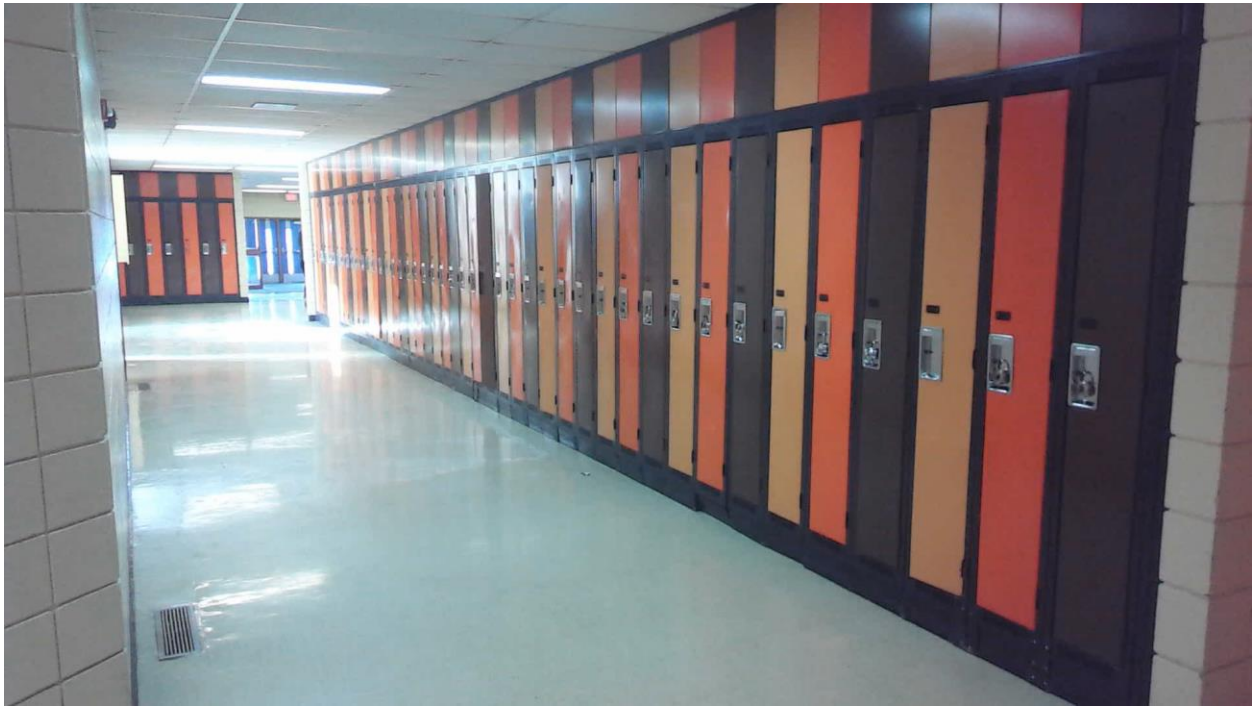
This is the hallway and a typical classroom in the 400 wing.



The newest section of the school is called the 500 wing. This would be a typical classroom.



And this is the hallway.



The band room.



And three science labs.



Home Economics – Renovation



Existing Home Ec Space



Future Home Ec Space – Under Construction

We are nearing completion a renovation that involves transitioning an existing science lab in the 500 wing into a state of the art Home Economics space. We are currently experiencing issues with supply of building materials; we are expecting to turn the space over by end of February.

Practical and Applied Arts – Renovated 2020/2021

PAA – Before Renovation



PAA – Classroom – After Renovation



PAA Woods Area – After Renovation



PAA Metals Area – After Renovation



Included in the previous EHS School Tour Report from 2017 is a statement of concerns. They are as follows:

Concerns:

1. *Air quality*
2. *Consistent sewer smell*
3. *Intercom/Surveillance*
4. *Flooding in office*
5. *Bathrooms are in poor condition*
6. *Inconsistent heat in winter*

Priorities:

1. *Air Quality*
2. *Intercom*
3. *Spiffed up bathrooms.*

While some of these concerns are still relevant today, I am proud to say a lot of these issues have been resolved or greatly improved.

- Sewer Smell – We have relaced 300’ of sewer piping and have eliminated the consistent sewer smell in all areas with the exception of the staff room and admin areas.
- Bathroom Condition – All washrooms and change rooms have been renovated.



Bathroom pictures before.



Bathroom pictures after

- Inconsistent Heat in Winter – Facilities HVAC Technicians spent a great deal of time understanding and improving the existing system. When a school has multiple additions in the fashion of EHS this will always be a challenge. The technicians have worked hard to get the most out of this system. While investigating an electrical control improvement opportunity was found. We invested \$35,000 in this improvement which has increased the flow of hot water from the boiler improving heat distribution throughout the facility. It isn't perfect but it is better than it has been for years.

As for the concerns that have not been addressed, a major capital funding request will be submitted February 28th, 2022. This will be the 3rd year GSSD has submitted the application. The scope of work requested addresses the remaining priority school concerns.

- Air quality to be addressed with a full HVAC upgrade involving removing all equipment and ducting from the crawl space.
- Sewer smell – What remains of the sewer smell will be resolved by installation of a ground cover throughout the existing crawl space and proper landscaping to ensure the crawl space remains dry.
- Other improvements included in the request
 - Levelling of Junior gym floor and new rubber sports floor
 - Demolition of the 100 wing
 - Student and staff parking lot
 - Renovation of ceilings, lighting, windows and exterior cladding, classroom millwork, and paint throughout.

We are hopeful that this project will soon be approved so we can restore Esterhazy High School to the wonderful facility that it is capable of being. In the meantime, we will continue to address the needs of staff and students by continuing to work through the list of improvements.