

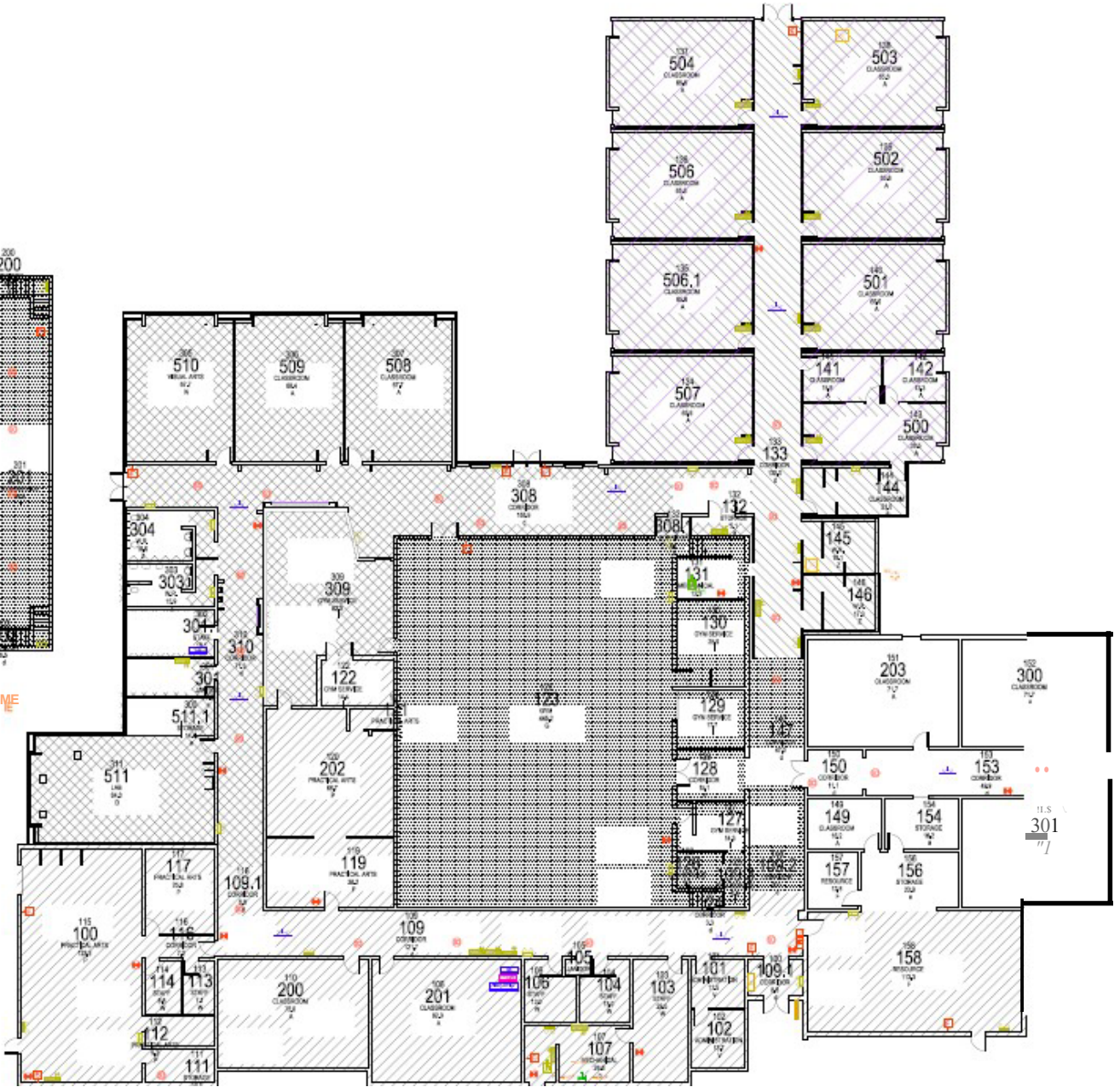
Welcome to Norquay School



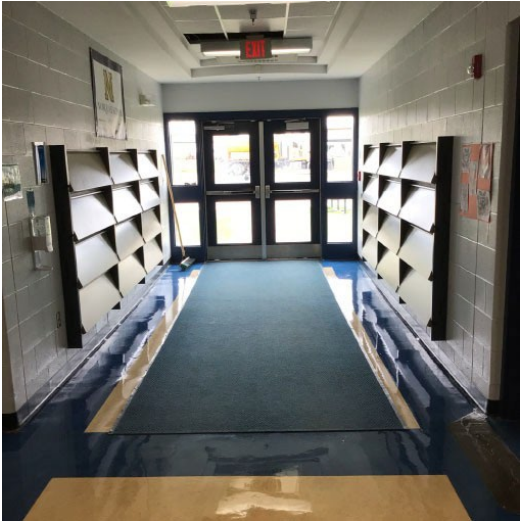
School Details	
Grade Configuration	K-12
Size	3551 m ² (38,223 ft ²)
Original Build Date	1971 – Classrooms 203,300, and 301
Addition(s)	1974 – Corridor and Gymnasium 1981 – Library, Staffroom/Offices, Computer Lab, Classroom, and PAA 2001 – West Portables Classrooms 501-507 2009 – SW Addition – Classrooms, Washroom, and Science Lab
Enrollment – 2022/23	239
Classrooms	16
Gymnasiums	1
PAA, Library, Band and Other	Library, PAA Shop, Home Ec, and Science Lab



GYI,JKZZAIIME
IIIIII



Entrance and Corridors:



Original Classrooms (1971):



Classroom 300



Classroom 203

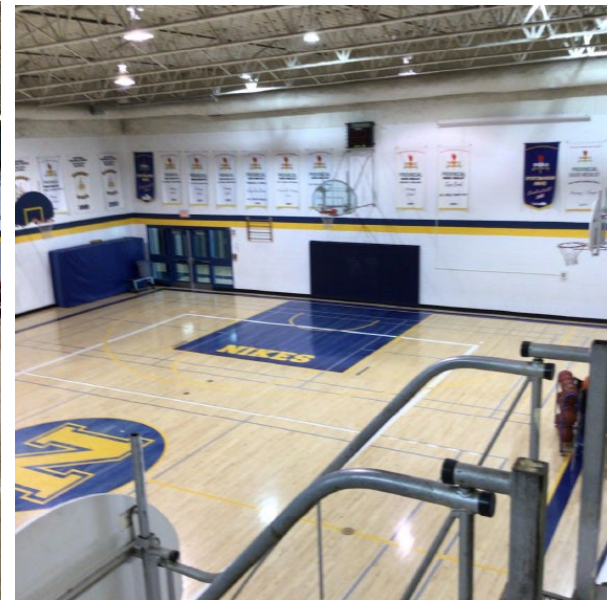
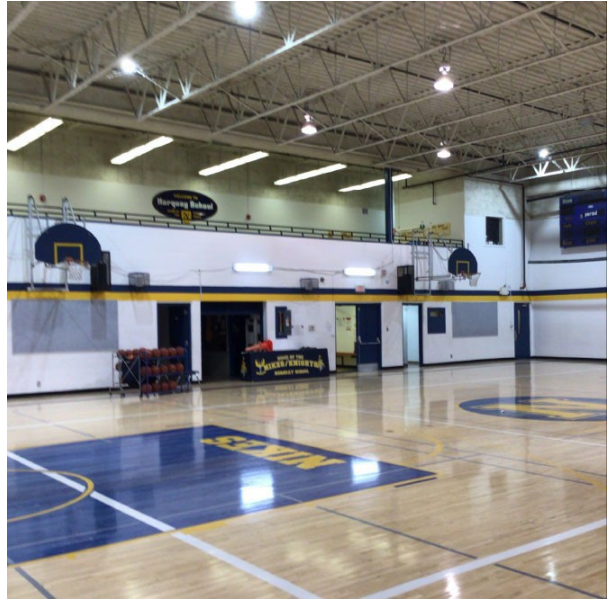


Classroom 301



Original Corridor

Gymnasium (1974):



Gymnasium Mezzanine



Girls Changeroom



Boys Changeroom

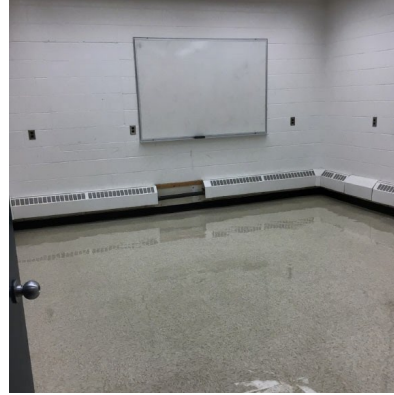
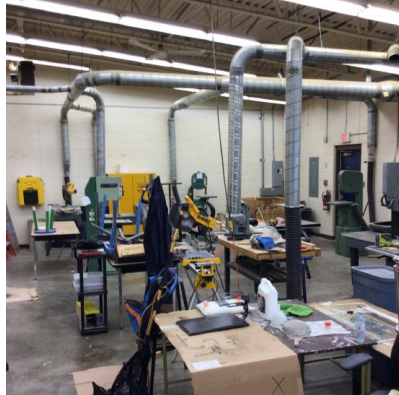
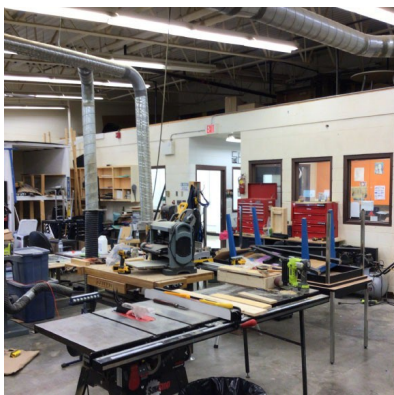
East Wing Addition (1981):



Classroom 201



Computer Lab 200



PAA – Woods, Metals, and Drafting



Library



PAA - Home Ec and Sewing

Classrooms 501-507 (2001):



Typical Portable Classroom Layout



Classrooms 508-510 and Science Lab (2009):



Classroom 508



Classroom 509



Classroom 510



Science Lab



Science Lab Storage Room



Entry/Exit



Corridor

Washrooms:



North Washrooms (2001)



South Washrooms (2009)



East Washrooms (1981)



Crawlspace under Portables



Exterior:



Recently completed projects:

- Home Ec Renovation
- Main entrance – Concrete Pad
- Playground (SCC)

Planned projects:

- Classroom Renovations – 203, 300, and 301
- Cultural Room
- Pre-K Space

Norquay School has seen its share of additions, renovations, and projects over the years. As soon as you enter the school you will realize how much the facility means to the people that work there and the community in general. It is clean, well kept and a great place for students to learn. Facilities looks forward to the upcoming improvements planned for near future.